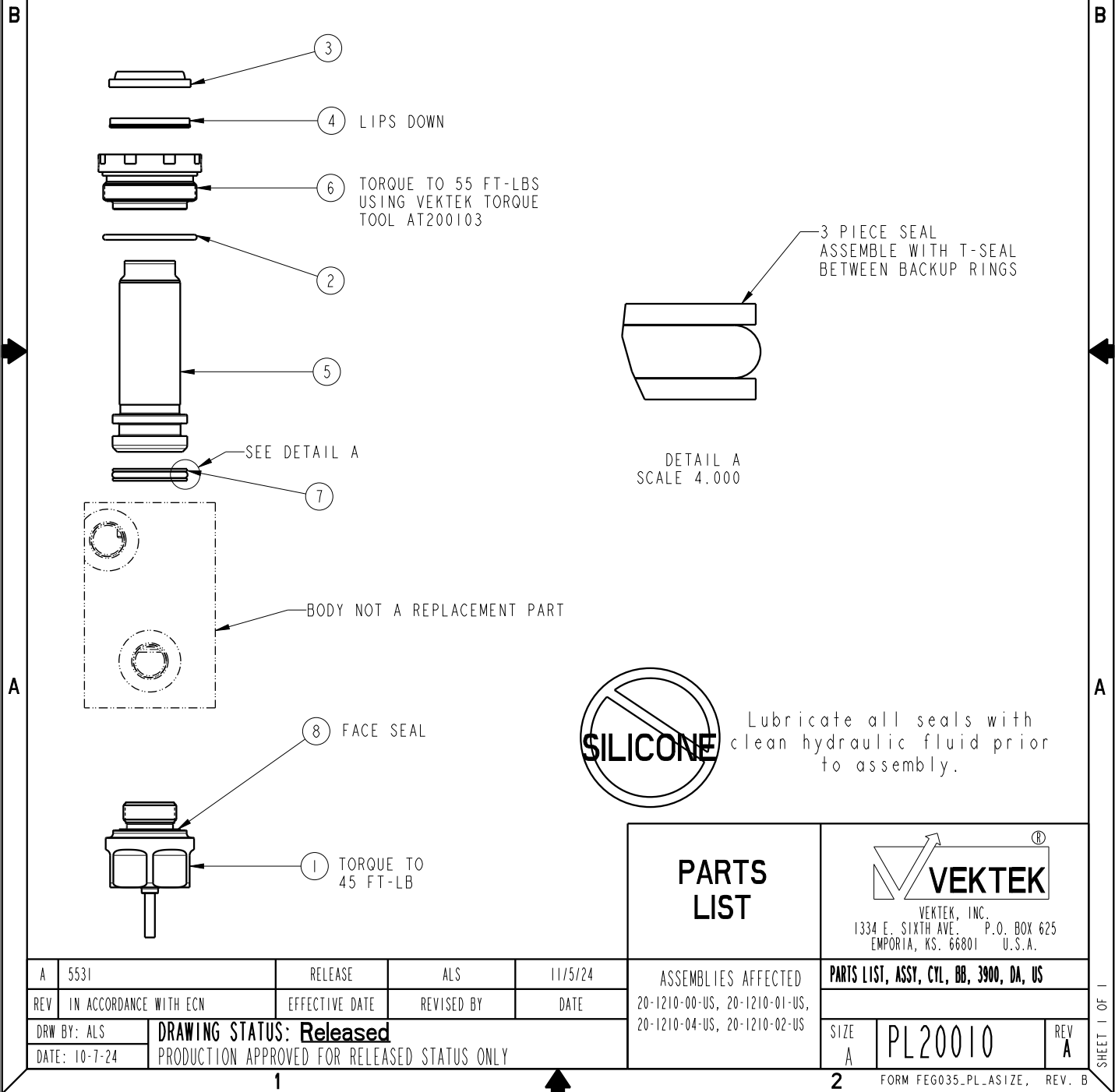



NO.	QTY	DESCRIPTION	MODEL NUMBER				STANDARD SEAL KIT	FKM SEAL KIT
			20-1210-00-US	20-1210-01-US	20-1210-04-US	20-1210-02-US		
1	1	SENSOR, ULTRASONIC, M12, 1m	29740200	29740200	29740200	29740200		
2	1	O-RING, (-024)	39001011	39001011	39001011	39001011	X	39012005
3	1	WIPER, SNAP-IN, (13/16)	39012008	39012008	39012008	39012008	X	X
4	1	SEAL, LL, (13/16X1/8X1/8X1-1/16)	39011045	39011045	39011045	39011045	X	39012005
5	1	PISTON, CYL, 3900, US	82011010	82011011	82011012	82011013		
6	1	GLAND, CYL, 3900 & 17.8 kN	82031002	82031002	82031002	82031002		
7	1	SEAL, T, (13/16X5/32X 1)	39H10017	39H10017	39H10017	39H10017	X	39V10017
8	1	SENSOR, FACE SEAL	43000040	43000040	43000040	43000040		
	1	SENSOR, FACE SEAL, FKM	43000041	43000041	43000041	43000041		
N/A	N/A	SEAL KIT, STANDARD	60200210	60200210	60200210	60200210	NOTED	
N/A	N/A	SEAL KIT, FKM	6V200209	6V200209	6V200209	6V200209		NOTED



PARTS LIST	 VEKTEK, INC. 1334 E. SIXTH AVE. P.O. BOX 625 EMPORIA, KS. 66801 U.S.A.	
	ASSEMBLIES AFFECTED	PARTS LIST, ASSY, CYL, BB, 3900, DA, US
REV	IN ACCORDANCE WITH ECN	EFFECTIVE DATE
DRW BY: ALS	DRAWING STATUS: <b>Released</b>	
DATE: 10-7-24	PRODUCTION APPROVED FOR RELEASED STATUS ONLY	
SIZE A	PL20010	REV A